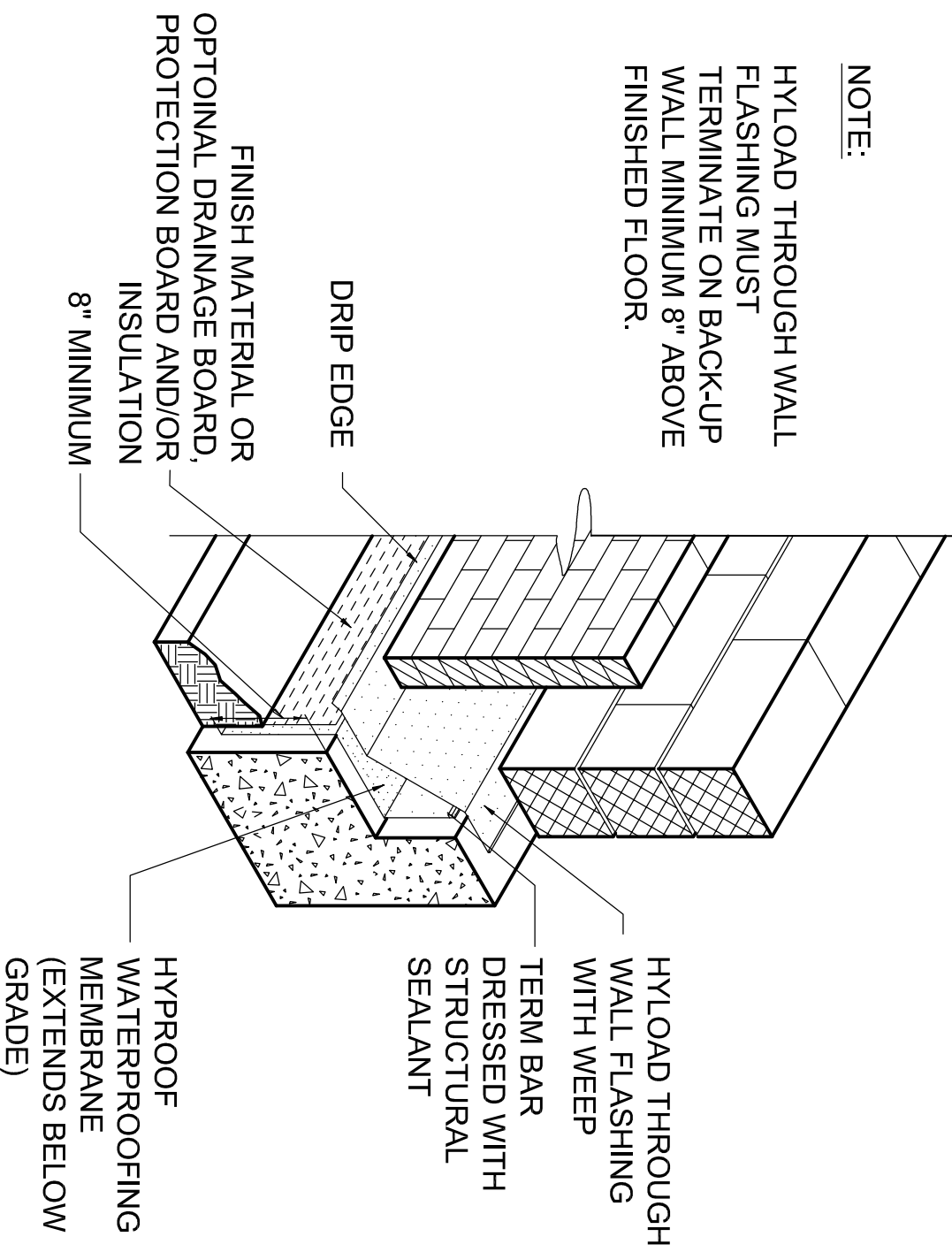


NOTE:
 HYLOAD THROUGH WALL FLASHING MUST TERMINATE ON BACK-UP WALL MINIMUM 8" ABOVE FINISHED FLOOR.



HYLOAD WATERPROOFING

ABOVE GRADE WALL WITH MASONRY CLADDING AND ABOVE GRADE BRICK SHELF

DWG NO. **WP07**

SIZE **A**

REV **A**

SCALE **NTS**

DRAWN BY **GDS**

SHEET **1 of 1**